

Missing canoers found safe



By Sandi Mashburn

A group of canoers who reportedly went missing along Shoal Creek Tuesday evening were found safely Wednesday morning on a creek bank in neighboring Lauderdale County, Alabama.

The group of five, including two adults and three children, were reported missing in the area of Iron City after they failed to return at the end of a day spent on the water.

Once notified, emergency personnel quickly responded to the area of Hardin Loop to set up a command center and organize the search effort. Members of numerous agencies responded to the scene along with several volunteers. They included members of Lawrence County Fire & Rescue, Lawrenceburg Fire Department, Lawrenceburg/Lawrence County Emergency Management Agency, Loretto Police Department, Lawrence County Sheriff's Department, Lawrenceburg Police Department, Lawrence County Emergency Medical Service, Greenhill, Alabama Fire Department, Killen, Alabama Fire & Rescue, Tennessee



Wildlife Resources Agency, and Tennessee Highway Patrol's Aviation Division.

Searchers covered an approximate twenty-mile area, from Hardin Loop to the Goose Shoals area. They report that the rescue effort was hampered by heavy fog, which greatly diminished visibility.

All five victims were located on the banks of Shoal Creek in Lauderdale County, Alabama at around 7:00 Wednesday morning, approximately five miles from the state line. They were transported back to the command center where medical personnel rendered attention for fatigue and hypothermia. They were fed a warm meal by Shoal Creek Canoe Run. None, officials said, had sustained serious injuries.

Officials reported that, in addition to the assistance provided by first responders and volunteers, they were aided in the search through use of a special jet boat loaned to them by owners of Crazy Horse Canoe Rental.

Chance encounters...

Continued from Page A-1

Keith explained that the Census is incredibly important because it keeps us from missing out on any funds that are rightfully ours that should be coming back to our local communities. He said that we are the citizens who pay into the system; we should be able to draw what we have contributed. In other words, everyone must be counted!

And there's more. Based on the population as determined by the Census, funds come back to our county for such things as schools, hospitals and hospital emergency services, affordable social housing, transportation, and senior centers. Also, congressional districts are delineated by the population count, and Lawrence County certainly benefits when we have proper representation. In addition, businesses use Census data to choose communities to grow into. So, it is critical for everyone to fill it out the Census when it arrives.

In Lawrence County, several folks have been hired. Partnership specialist James Evans, who covers Lewis, Marshall, Lawrence, Maury, and Giles Counties, will work with local governments, elected officials, and anyone in the community to make sure people understand the importance of the Census. Beth Keaton at the Chamber of Commerce is the Complete Count Committee Chairperson for Lawrence County. She will also work to ensure that everyone is on board and understands the vital nature of the Census.

So this is what I conveyed to my inquisitive writer friend about my inspiration for a local story. A Friday visit to the Loretto Farmers Market led to a chance encounter, which gave me fodder for a very important message for Lawrence Countians. Inspiring people are all around this place we call home, and I love nothing more than finding them.

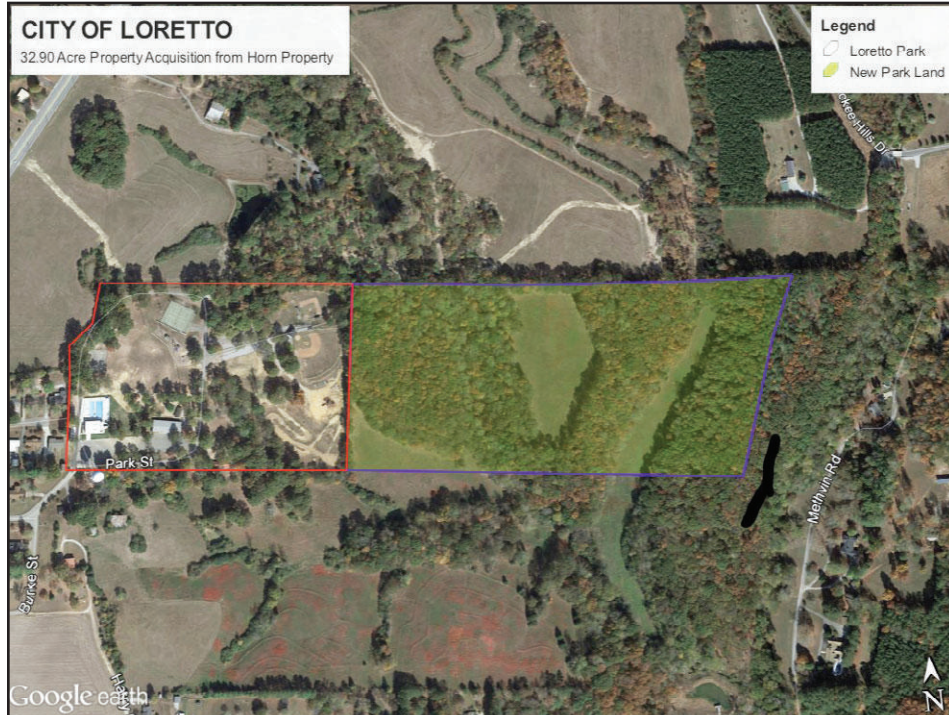
Child sex abuse...

Continued from Page A-1

kins has been scheduled an initial appearance in General Sessions Court on Thursday, September 5, 2019.

On Wednesday, the child's mother, Annie Martin, age 26, was arrested on one count of failure to report child sexual abuse. Her bond was set at \$500,000. Authorities allege that she had known about the on-going abuse for several months, but did not report the allegations.

For more information, please go to 2020census.gov/jobs or call 1-855-JOB-2020. The pay scale for each county in Tennessee is listed on the website. The Federal Relay Service is www.gsa.gov/fedrelay or call 1-800-877-8339 TTY/ASCII.

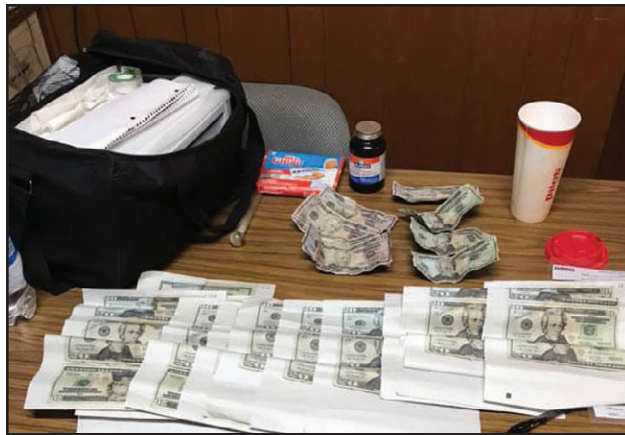


Ethridge PD busts counterfeiters

By Sandi Mashburn

Ethridge Police officers, called to investigate counterfeit bills being passed at a local business Wednesday, were able to apprehend four individuals and shut down a counterfeit operation.

Officers with the Ethridge Police Department responded to Dollar General Store, located at 3615 U.S. Highway 43 North. Employees reported that three persons had come into the



business and attempted to make purchases using two counterfeit \$50 bills. In addition, they reported that the persons had been observed shoplifting. The suspects fled from the scene prior to the officers' arrival.

Ethridge officers, assisted by deputies with the Lawrence County Sheriff's Department, quickly began to investigate the incident. Evidence at the scene led them to a home on North Church Street. There, they report finding "evidence of a counterfeit operation."

At the present time they are continuing to investigate the matter. Officials report, however, that they will be presenting evidence against four persons to a Lawrence County Grand Jury. At that time they will be seeking indictments, charging these persons with crimes such as criminal simulation, fleeing to avoid arrest, and shoplifting.

LHS Band to perform in Nashville parade

Your Loretto Band, a participant in the 63rd Annual Nashville Christmas Parade in 2016 and the State of Tennessee's official representative in this year's 2019 National Memorial Day Parade, has been invited once again to celebrate Christmas this year in the Music City. The 66th Annual Nashville Christmas Parade is set for December 7th, 2019.

Lawrenceburg Head Start is enrolling now

Lawrenceburg Head Start is now offering enrollment. Parents can sign up their children by visiting the school at the corner of Taylor Street and College Street or by calling 762-6039. School is starting on August 19th.



Aligned Medical Center

Medical | Chiropractic | Rehabilitation

931-766-7915

Working together for a healthier you!



718 N. Military Avenue • Lawrenceburg, TN

ALIGNED MEDICAL CENTER
Now Offering Primary Care

Walk-Ins Welcome

Most Insurances Accepted - Aetna • BCBS • Cigna • Medicare • United Healthcare

NOTICE

We will not be publishing the
Lawrence County Advocate
on the dates as followed.

Sunday, August 18th, 2019

Sunday, September 15th, 2019

Sunday, October 20th, 2019

**November - ALL PAPERS WILL
BE PRINTED AND DELIVERED
THIS MONTH**

Wednesday, December 25th, 2019

Wednesday, January 1st, 2020

We value and appreciate our
advertisers and loyal readers
who make the Advocate the
best paper in Lawrence County.

MONUMENT HILL

317 S. Military Ave (just south of the Lawrenceburg square)
Historical home originally built in 1852-1853 completely renovated
and preserved 3800 sq. ft. 4 bed 3 1/2 baths. \$449,000

THE WAY REALTY & AUCTIONS
FL #6157
931-580-4669